

## Compact Closures CODC2 - CDOC2 Patch & Splice

Optotec has a wide range of closures matching every need in telecommunication networks.

Main features are:

- Watertight containers IP68 (IEC 529).
- Suitable for traditional cables and micro-cables with G652 and G657 fibers.
- CODC2 are splice only closures.
- CDOC2 are patch&splices closures.
- Inner stack is used to fix SAMX splicing modules on one side, while the other side provides storage space for midspan cables.
- CDOC2 includes a patch panel for SC simplex or LC duplex adapters.
- All closures are equipped with a easy to use sealing CLAMP and a technical silicone gasket that guarantees the seal.
- All Optotec's closures are provided with an RFID system.



### APPLICATIONS

- In line closures, branch joints and pothead installations.
- Aerial networks, pole and on the wall.
- Underground networks: inside handholes/manholes.

### TECHNICAL FEATURES

- High quality thermoplastic material - watertight.
- BASE and DOME (IP68, IEC 529) with clamp and O-ring closing system.
- Management Capability of various types of tube cables, slotted core and ribbon.
- Easy access to the junction area through CLAMP opening equipped with guided locking.
- Area dedicated to midspan cable modules (loop cable).
- The BASE is suitable for both the heat-shrinking sealing kit and cold sealing kit.

### ORDERING INFORMATION

PRODUCT LINE	SERIE NAME	CONFIGURATION	BASE TYPE	DOME TYPE		ADAPTERS NO. SC OR LC TYPE
ODC2 Compact Closures Version	CDOC2	SPLICE ONLY	A	A	B	-
	CDOC2	PATCH & SPLICE	A	A	-	24

### COMPONENTS AND CONFIGURATIONS

#### DIMENSIONS

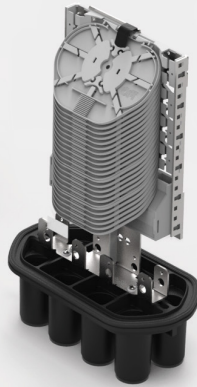
HEIGHT 380 mm  
 WIDTH 280 mm  
 DEPTH 150 mm



HEIGHT  
 DEPTH  
 WIDTH

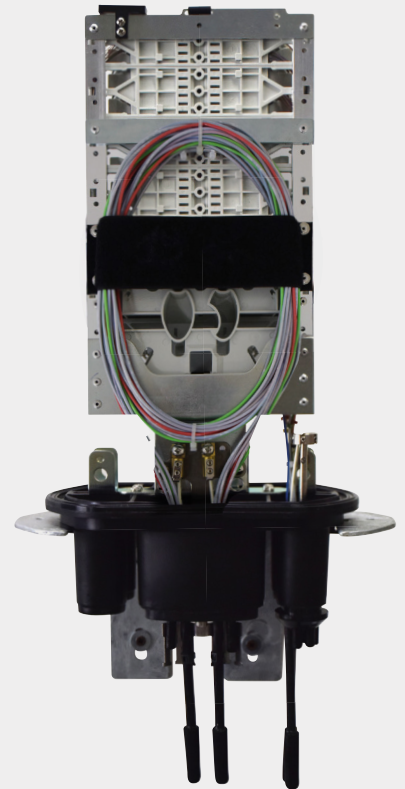
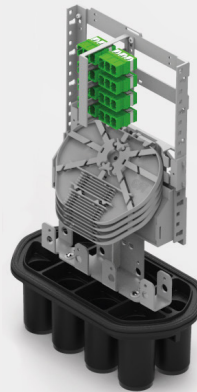
#### splice only CDOC2 AA

UP TO 280 FIBRES SPLICE  
 CAPACITY 4 SAMX HD  
 MODULES



#### Patch & Splice CDOC2 AA

UP TO 96 FIBRES SPLICE  
 CAPACITY 1 SAMX HD  
 MODULES AND UP TO 24 ADAPTRES



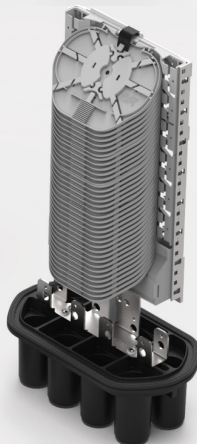
MIDSPAN  
 MODULE STORAGE  
 AREA DETAIL



HEIGHT  
 DEPTH  
 WIDTH

#### splice only CDOC2 AB

UP TO 432 FIBRES SPLICE  
 CAPACITY 6 SAMX HD  
 MODULES



BASE A



#### DIMENSIONS

HEIGHT 450 mm  
 WIDTH 280 mm  
 DEPTH 150 mm